



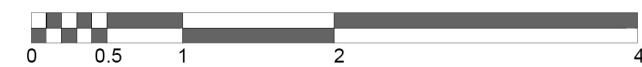
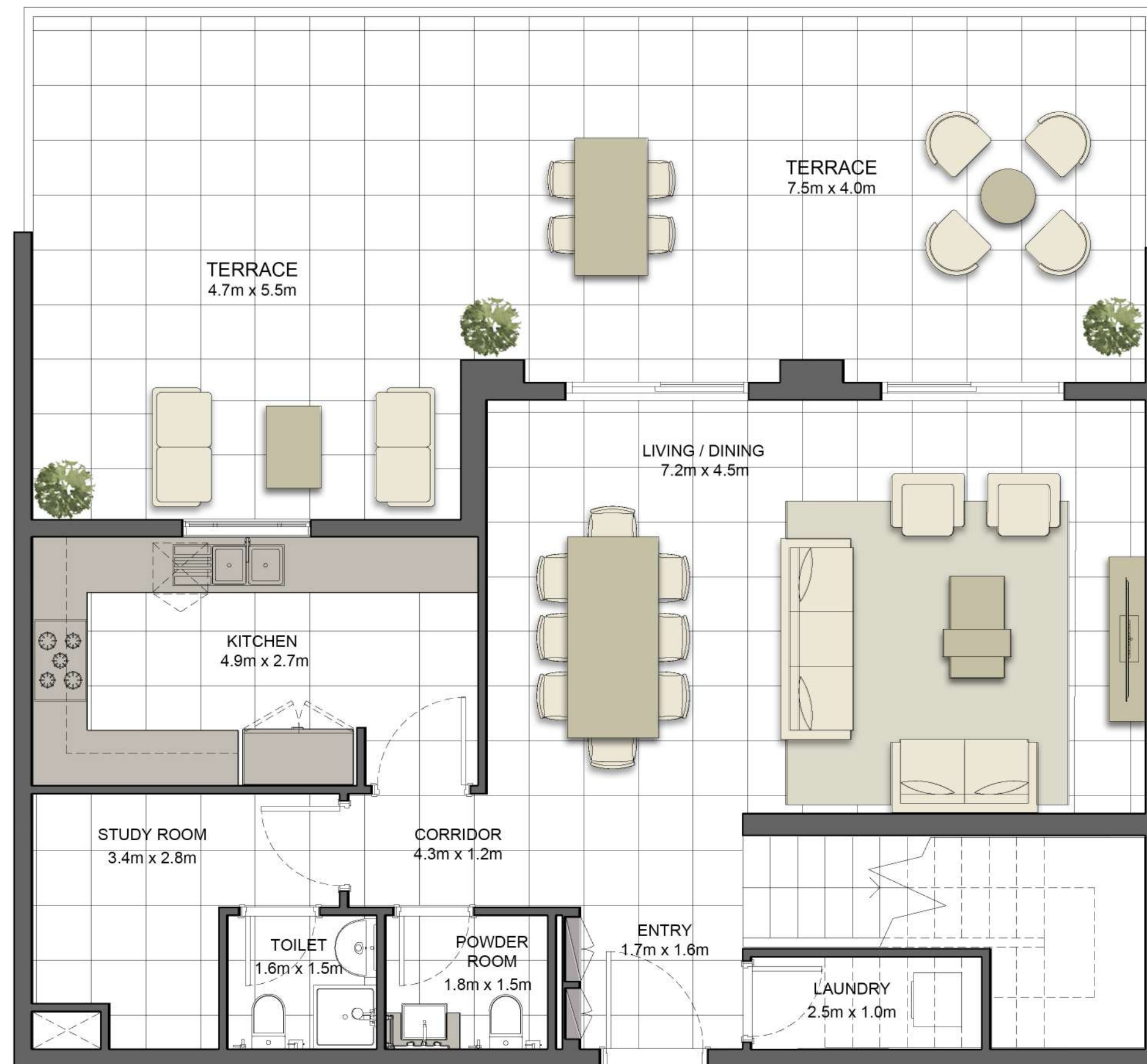
کریستال

CRYSTAL RESIDENCES

TOWNHOUSES

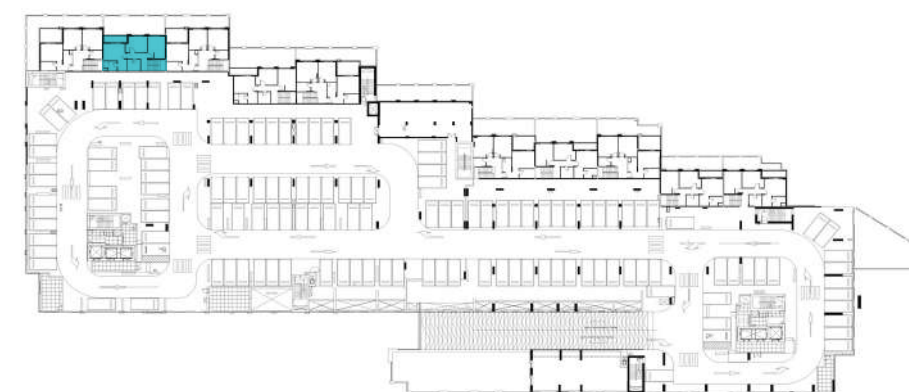
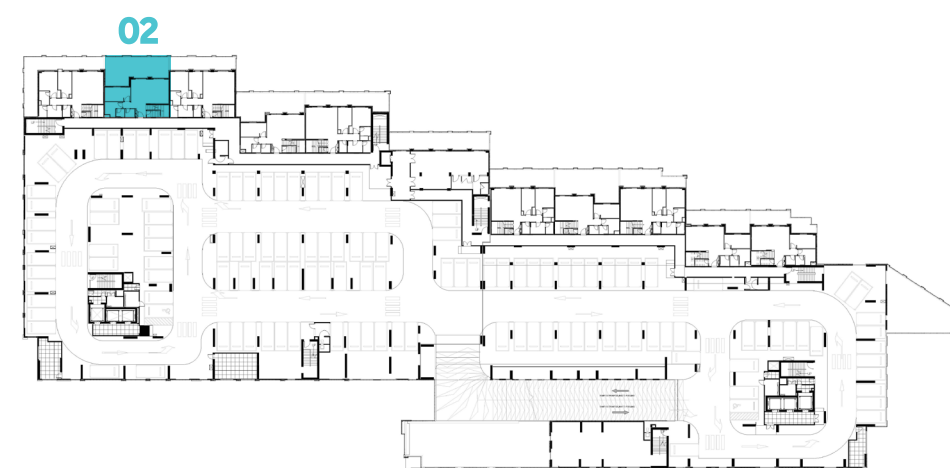
CRYSTAL RESIDENCES

BUILDING	CRYSTAL TWO
3 BEDROOM + STUDY	TYPE 3TH-1
UNIT NO.	102
SUITE AREA	171.3 m² / 1843.3 ft²
BALCONY AREA	6.8 m² / 72.7 ft²
COVERED TERRACE AREA	7.2 m² / 77.8 ft²
TERRACE AREA	48.3 m² / 519.7 ft²
TOTAL AREA	233.5 m² / 2513.5 ft²



LEVEL 01

LEVEL 02

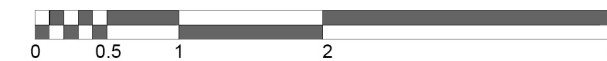
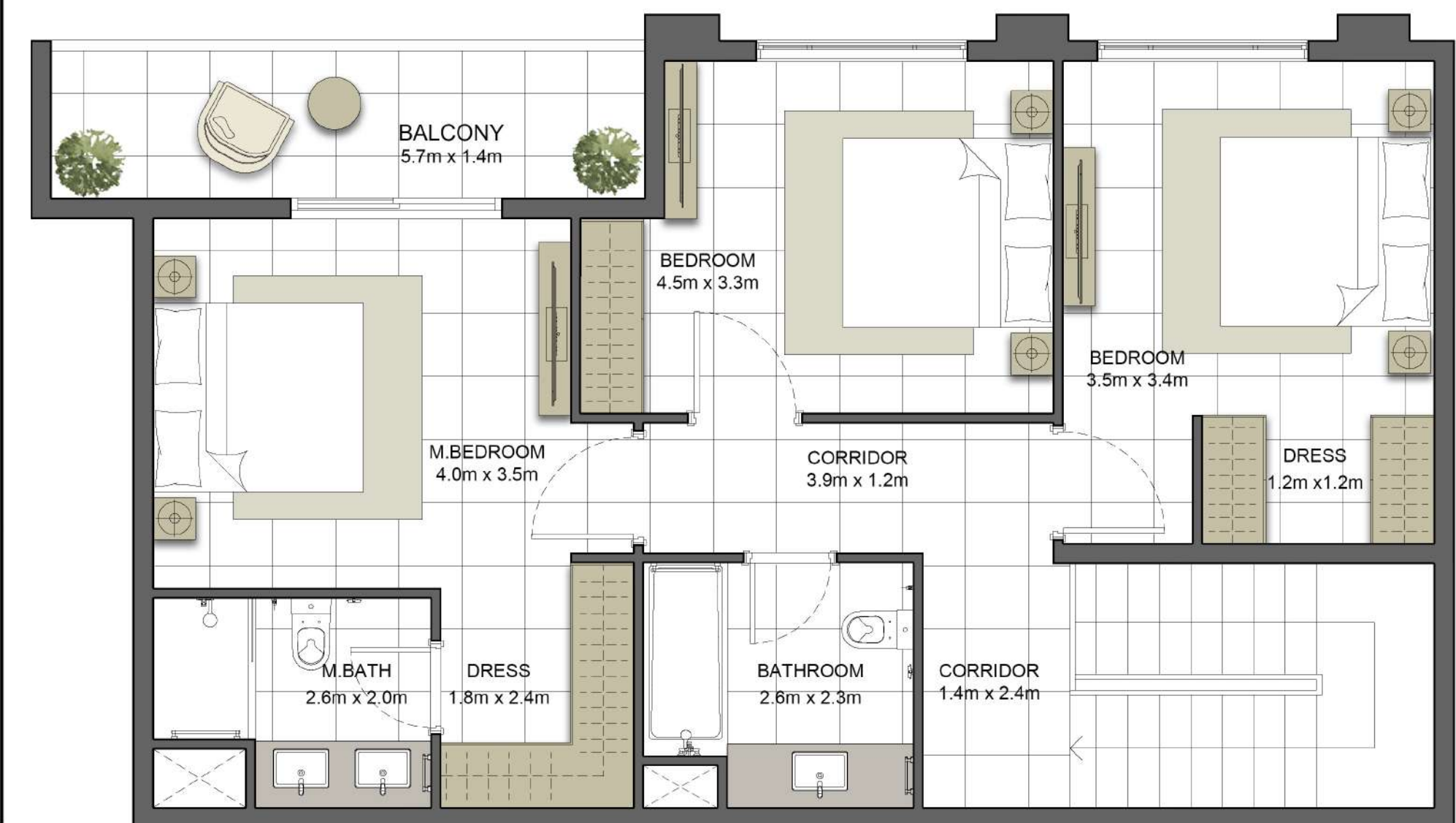
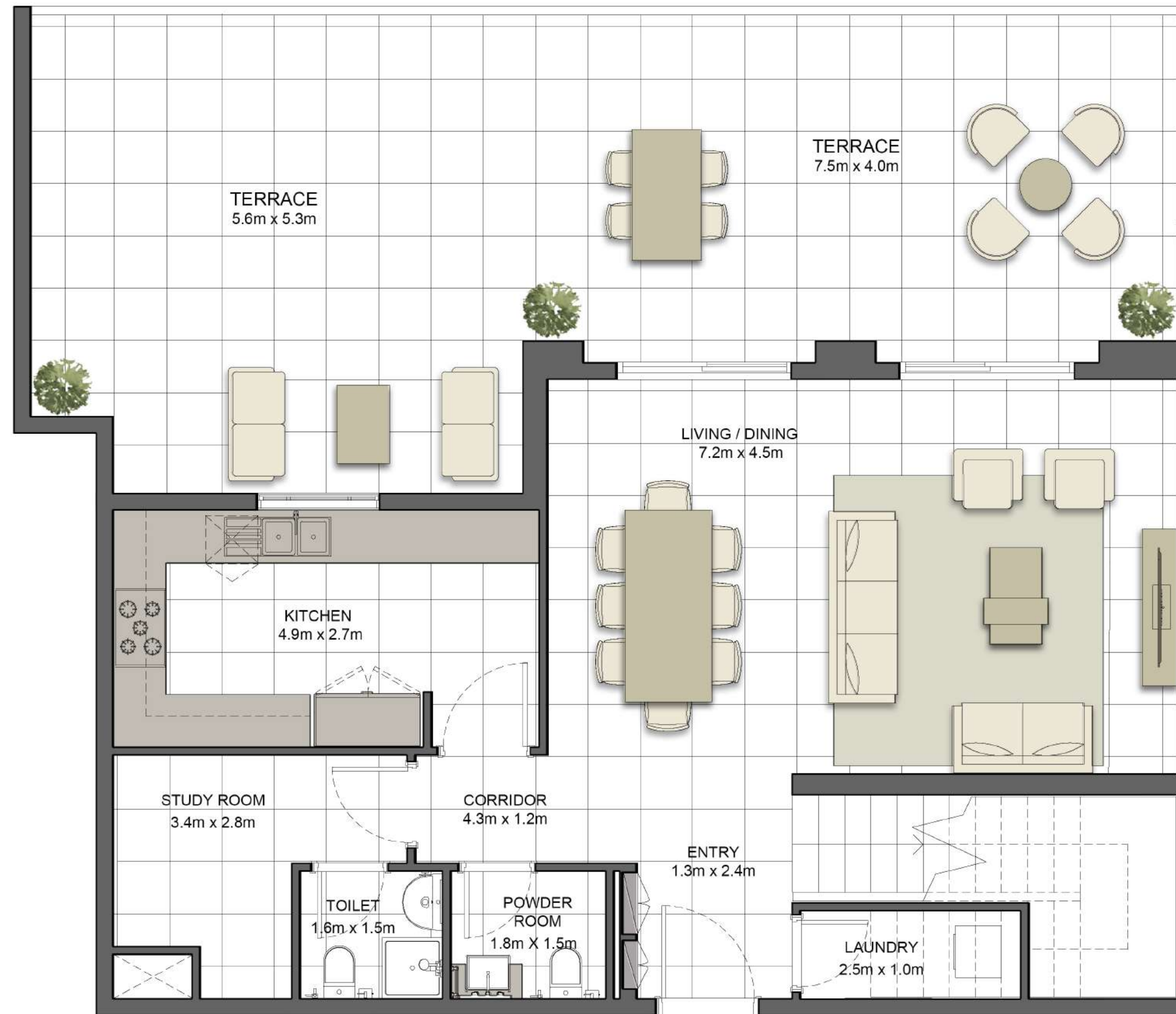


Disclaimer:

1. All room dimensions are measured to structural elements and exclude all finishes and construction tolerances. 2. All dimensions have been provided by our consultant architects. 3. All materials, dimensions and drawings are approximate. Information is subject to change without notice. 4. Actual suite area may vary from the stated area. Drawings not to scale. The developer reserves the right to make revisions. 5. Calculation of suite area is measured as the area bounded by the centre line of the demising or partition walls separating one unit from another unit, the exterior face of all exterior walls, and the exterior face of the corridor wall enclosing the adjoining unit. 6. Calculation of balcony area is measured as the area bounded by the centre line of the demising or partition walls separating one unit from another unit, the outmost face of the enclosing guard and the external face of the unit adjoining the balcony. 7. The units are measured at typical floor in the building. Columns may vary in size depending on the floor level.

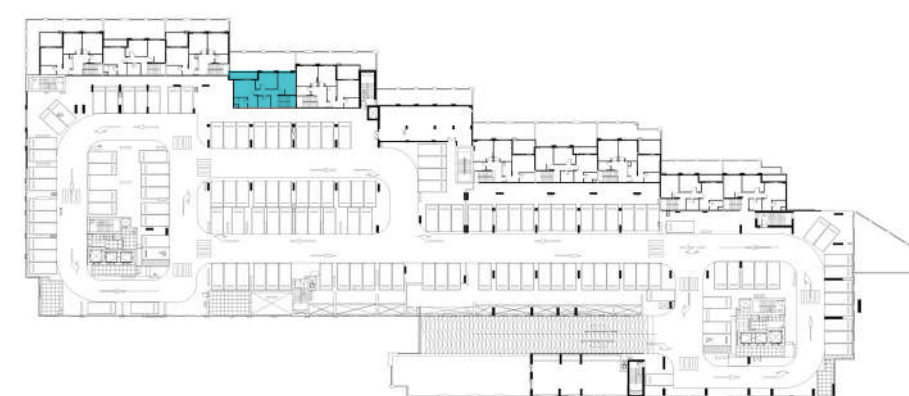
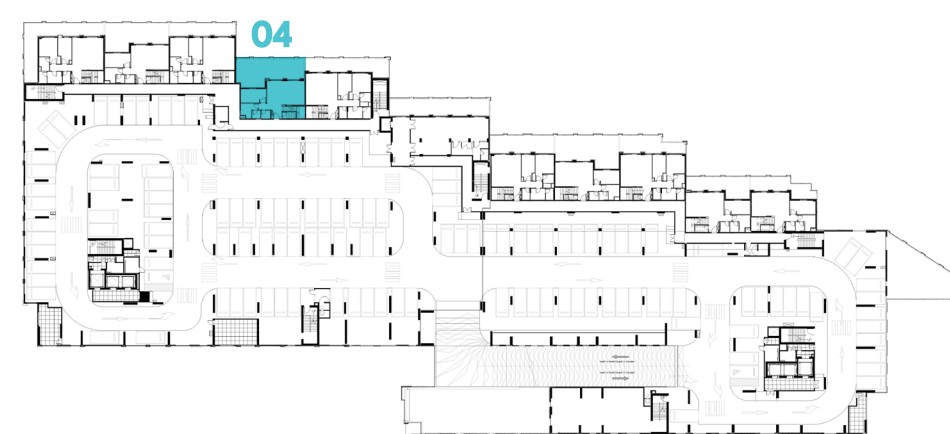
CRYSTAL RESIDENCES

BUILDING	CRYSTAL TWO
3 BEDROOM +STUDY	TYPE 3TH-2
UNIT NO.	104
SUITE AREA	172.4 m² / 1855.9 ft²
BALCONY AREA	8.4 m² / 90.4 ft²
COVERED TERRACE AREA	8.5 m² / 91.2 ft²
TERRACE AREA	52.6 m² / 566.5 ft²
TOTAL AREA	241.9 m² / 2604.0 ft²



LEVEL 01

LEVEL 02



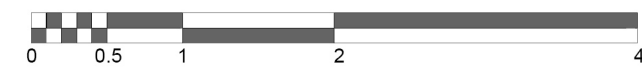
Disclaimer:

1. All room dimensions are measured to structural elements and exclude all finishes and construction tolerances. 2. All dimensions have been provided by our consultant architects. 3. All materials, dimensions and drawings are approximate. Information is subject to change without notice. 4. Actual suite area may vary from the stated area. Drawings not to scale. The developer reserves the right to make revisions. 5. Calculation of suite area is measured as the area bounded by the centre line of the demising or partition walls separating one unit from another unit, the exterior face of all exterior walls, and the exterior face of the corridor wall enclosing the adjoining unit. 6. Calculation of balcony area is measured as the area bounded by the centre line of the demising or partition walls separating one unit from another unit, the outmost face of the enclosing guard and the external face of the unit adjoining the balcony. 7. The units are measured at typical floor in the building. Columns may vary in size depending on the floor level.

کریستان

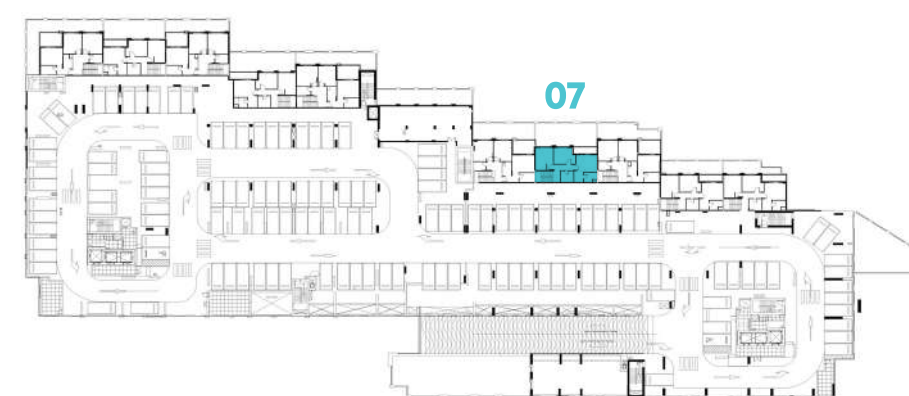
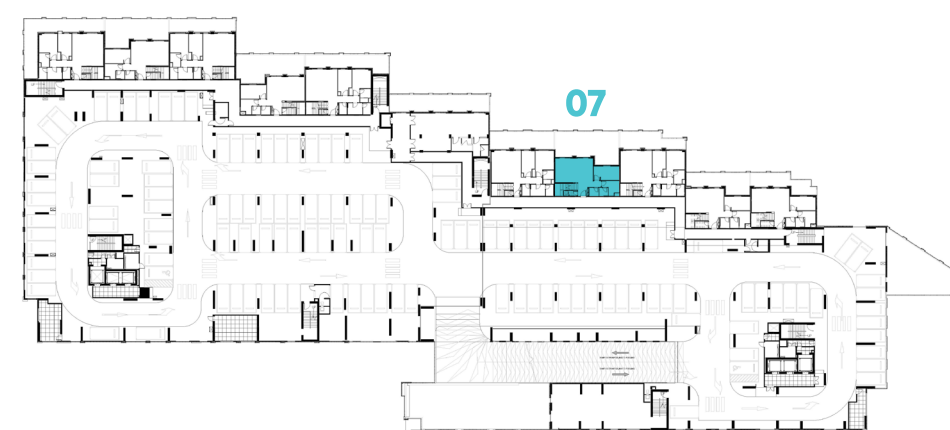
CRYSTAL RESIDENCES

BUILDING	CRYSTAL TWO
3 BEDROOM + STUDY	TYPE 3TH-3
UNIT NO.	107
SUITE AREA	195.2 m ² / 2101.1 ft ²
BALCONY AREA	12.7 m ² / 136.9 ft ²
COVERED TERRACE AREA	7.1 m ² / 75.9 ft ²
TERRACE AREA	59.2 m ² / 637.7 ft ²
TOTAL AREA	274.2 m ² / 2951.6 ft ²



LEVEL 01

LEVEL 02



Disclaimer:

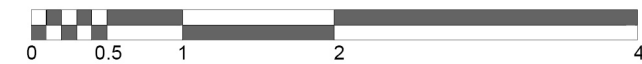
1. All room dimensions are measured to structural elements and exclude all finishes and construction tolerances. 2. All dimensions have been provided by our consultant architects. 3. All materials, dimensions and drawings are approximate. Information is subject to change without notice. 4. Actual suite area may vary from the stated area. Drawings not to scale. The developer reserves the right to make revisions. 5. Calculation of suite area is measured as the area bounded by the centre line of the demising or partition walls separating one unit from another unit, the exterior face of all exterior walls, and the exterior face of the corridor wall enclosing the adjoining unit. 6. Calculation of balcony area is measured as the area bounded by the centre line of the demising or partition walls separating one unit from another unit, the outmost face of the enclosing guard and the external face of the unit adjoining the balcony. 7. The units are measured at typical floor in the building. Columns may vary in size depending on the floor level.



جزيرة مريم
MARYAM ISLAND

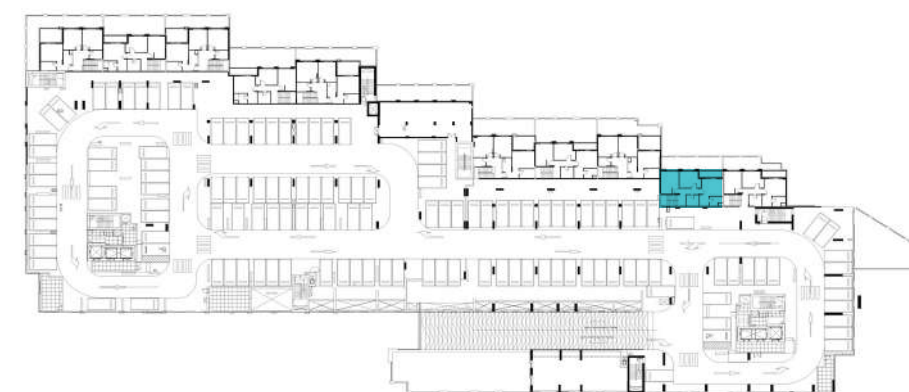
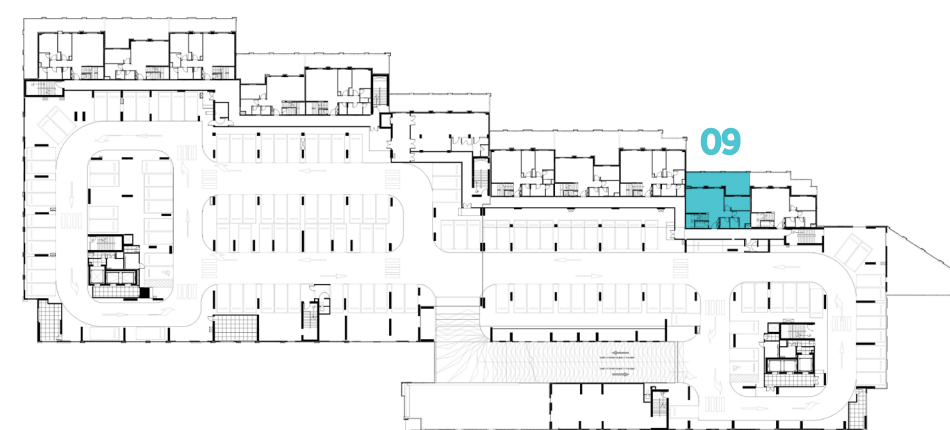
CRYSTAL RESIDENCES

BUILDING	CRYSTAL TWO
3 BEDROOM + STUDY	TYPE 3TH-4
UNIT NO.	109
SUITE AREA	181.8 m ² / 1957.1 ft ²
BALCONY AREA	6.6 m ² / 71.0 ft ²
COVERED TERRACE AREA	7.1 m ² / 75.9 ft ²
TERRACE AREA	35.2 m ² / 378.4 ft ²
TOTAL AREA	230.6 m ² / 2482.4 ft ²



LEVEL 01

LEVEL 02

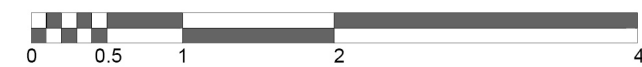


Disclaimer:

1. All room dimensions are measured to structural elements and exclude all finishes and construction tolerances. 2. All dimensions have been provided by our consultant architects. 3. All materials, dimensions and drawings are approximate. Information is subject to change without notice. 4. Actual suite area may vary from the stated area. Drawings not to scale. The developer reserves the right to make revisions. 5. Calculation of suite area is measured as the area bounded by the centre line of the demising or partition walls separating one unit from another unit, the exterior face of all exterior walls, and the exterior face of the corridor wall enclosing the adjoining unit. 6. Calculation of balcony area is measured as the area bounded by the centre line of the demising or partition walls separating one unit from another unit, the outmost face of the enclosing guard and the external face of the unit adjoining the balcony. 7. The units are measured at typical floor in the building. Columns may vary in size depending on the floor level.

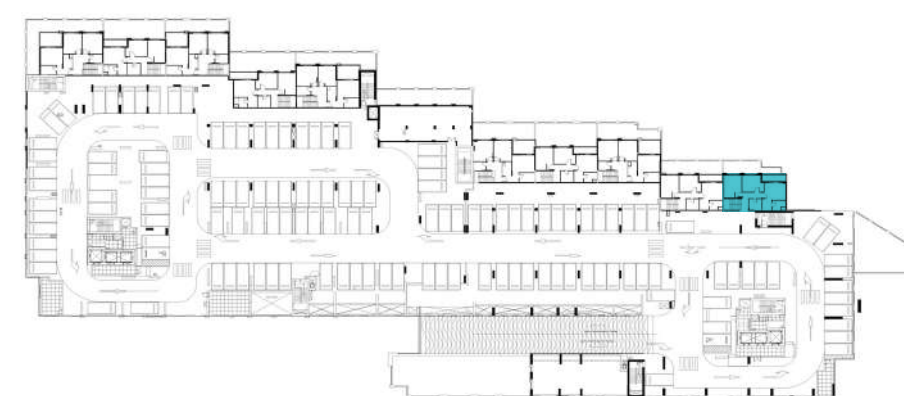
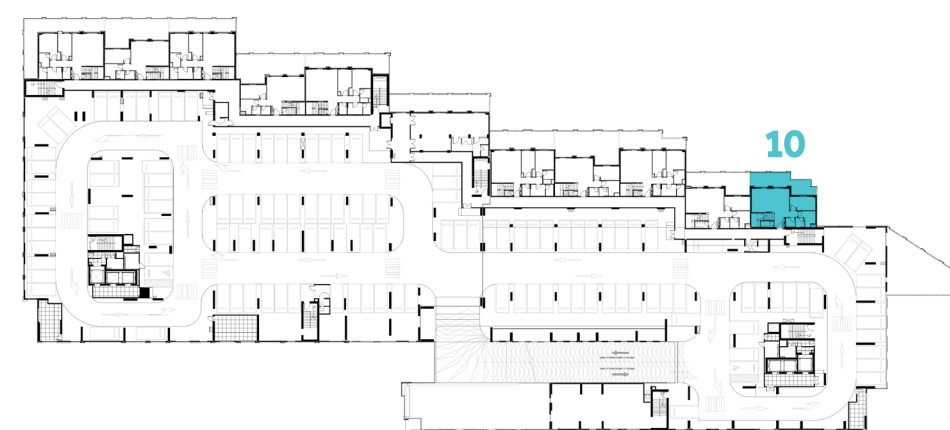
CRYSTAL RESIDENCES

BUILDING	CRYSTAL TWO
3 BEDROOM + STUDY	TYPE 3TH-5
UNIT NO.	110
SUITE AREA	182.0 m² / 1959.0 ft²
BALCONY AREA	7.0 m² / 75.3 ft²
COVERED TERRACE AREA	7.4 m² / 79.1 ft²
TERRACE AREA	26.1 m² / 281.3 ft²
TOTAL AREA	222.5 m² / 2394.8 ft²



LEVEL 01

LEVEL 02



Disclaimer:

1. All room dimensions are measured to structural elements and exclude all finishes and construction tolerances. 2. All dimensions have been provided by our consultant architects. 3. All materials, dimensions and drawings are approximate. Information is subject to change without notice. 4. Actual suite area may vary from the stated area. Drawings not to scale. The developer reserves the right to make revisions. 5. Calculation of suite area is measured as the area bounded by the centre line of the demising or partition walls separating one unit from another unit, the exterior face of all exterior walls, and the exterior face of the corridor wall enclosing the adjoining unit. 6. Calculation of balcony area is measured as the area bounded by the centre line of the demising or partition walls separating one unit from another unit, the outmost face of the enclosing guard and the external face of the unit adjoining the balcony. 7. The units are measured at typical floor in the building. Columns may vary in size depending on the floor level.

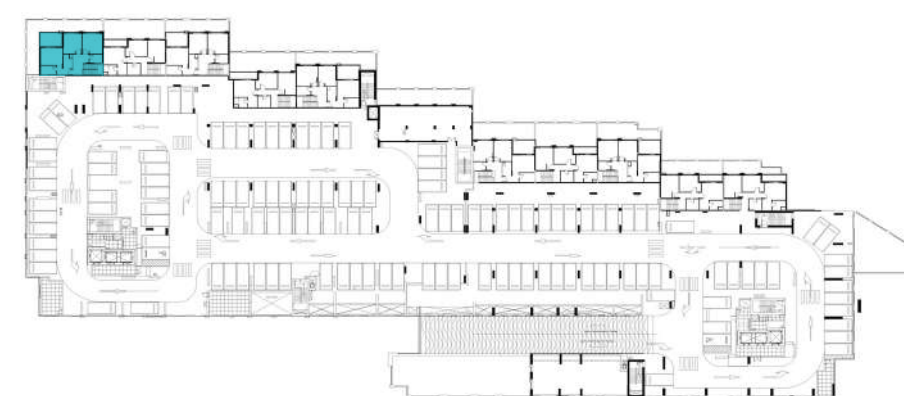
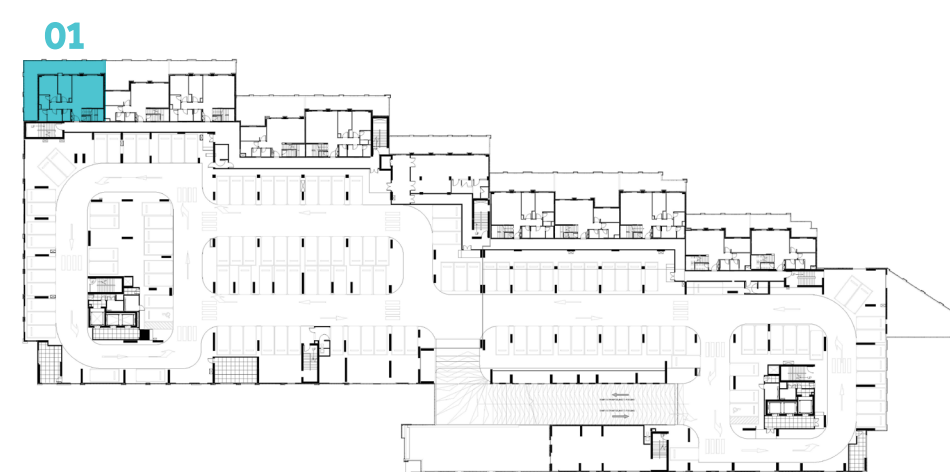
CRYSTAL RESIDENCES

BUILDING	CRYSTAL TWO
4 BEDROOM + STUDY	TYPE 4TH-1
UNIT NO.	101
SUITE AREA	210.1 m² / 2261.5 ft²
BALCONY AREA	12.7 m² / 137.0 ft²
TERRACE AREA	60.7 m² / 653.4 ft²
TOTAL AREA	283.5 m² / 3051.9 ft²



LEVEL 01

LEVEL 02



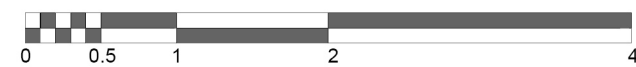
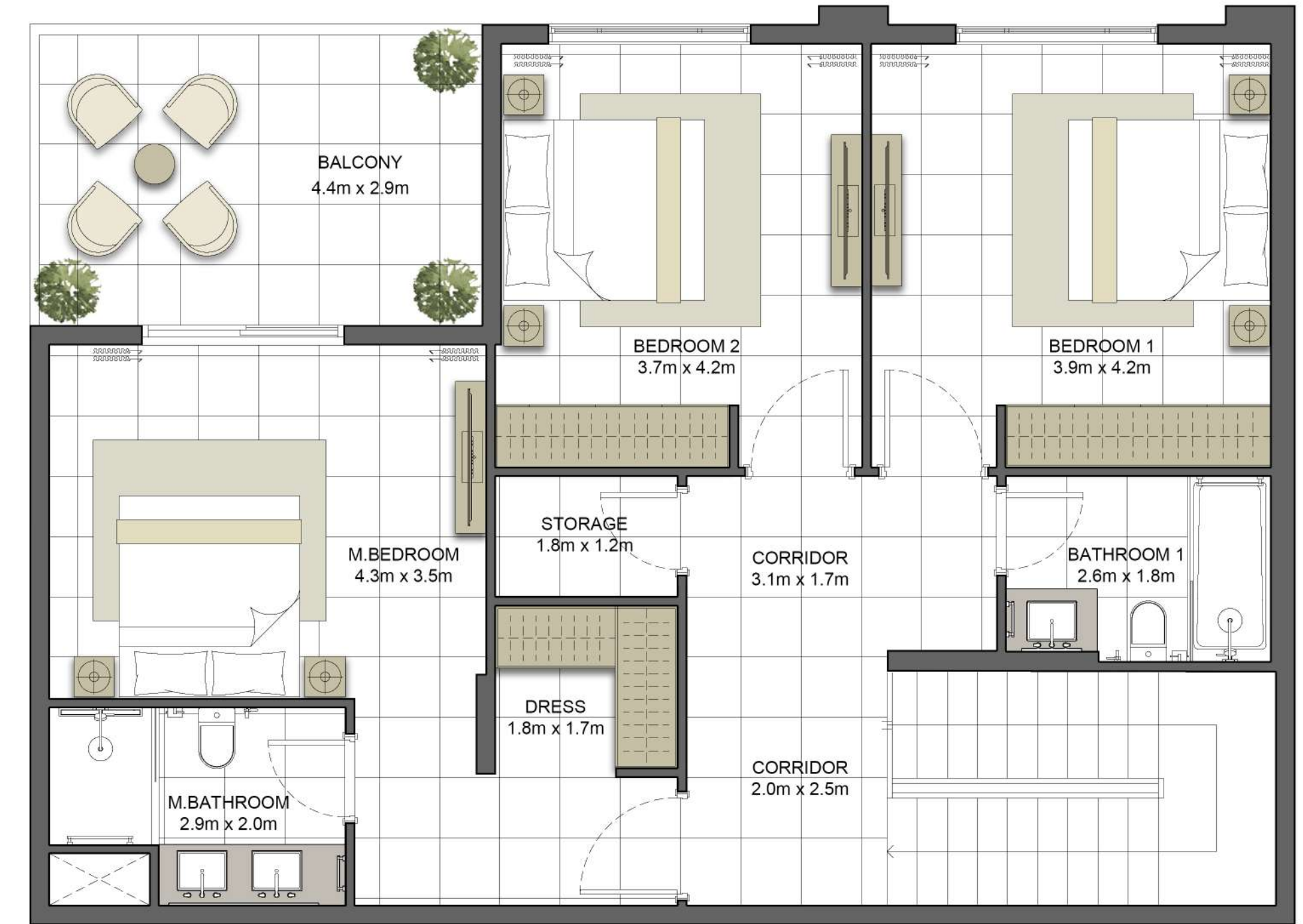
Disclaimer:

1. All room dimensions are measured to structural elements and exclude all finishes and construction tolerances. 2. All dimensions have been provided by our consultant architects. 3. All materials, dimensions and drawings are approximate. Information is subject to change without notice. 4. Actual suite area may vary from the stated area. Drawings not to scale. The developer reserves the right to make revisions. 5. Calculation of suite area is measured as the area bounded by the centre line of the demising or partition walls separating one unit from another unit, the exterior face of all exterior walls, and the exterior face of the corridor wall enclosing the adjoining unit. 6. Calculation of balcony area is measured as the area bounded by the centre line of the demising or partition walls separating one unit from another unit, the outmost face of the enclosing guard and the external face of the unit adjoining the balcony. 7. The units are measured at typical floor in the building. Columns may vary in size depending on the floor level.

کریستان

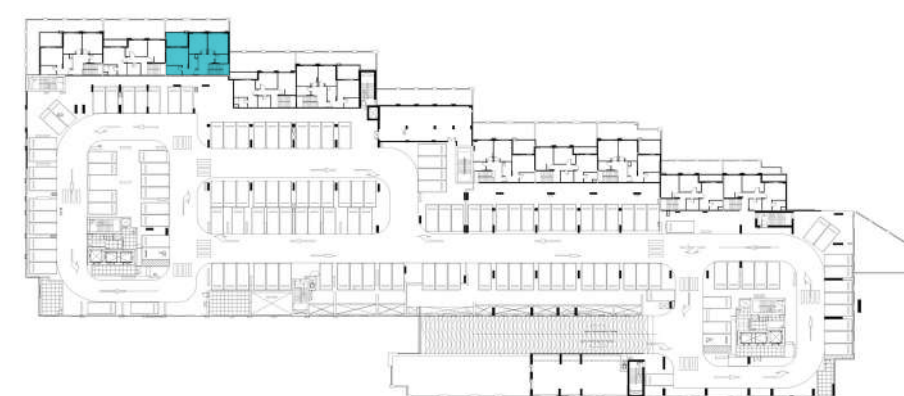
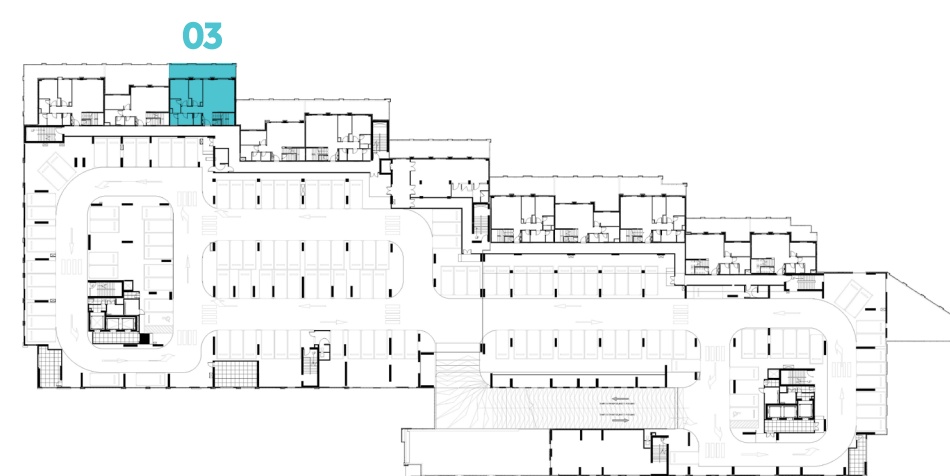
CRYSTAL RESIDENCES

BUILDING	CRYSTAL TWO
4 BEDROOM + STUDY	TYPE 4TH-2
UNIT NO.	103
SUITE AREA	209.5 m ² / 2254.5 ft ²
BALCONY AREA	12.8 m ² / 137.5 ft ²
TERRACE AREA	31.5 m ² / 339.2 ft ²
TOTAL AREA	253.7 m ² / 2731.1 ft ²



LEVEL 01

LEVEL 02



Disclaimer:

1. All room dimensions are measured to structural elements and exclude all finishes and construction tolerances. 2. All dimensions have been provided by our consultant architects. 3. All materials, dimensions and drawings are approximate. Information is subject to change without notice. 4. Actual suite area may vary from the stated area. Drawings not to scale. The developer reserves the right to make revisions. 5. Calculation of suite area is measured as the area bounded by the centre line of the demising or partition walls separating one unit from another unit, the exterior face of all exterior walls, and the exterior face of the corridor wall enclosing the adjoining unit. 6. Calculation of balcony area is measured as the area bounded by the centre line of the demising or partition walls separating one unit from another unit, the outmost face of the enclosing guard and the external face of the unit adjoining the balcony. 7. The units are measured at typical floor in the building. Columns may vary in size depending on the floor level.



جزيرة مريم
MARYAM ISLAND

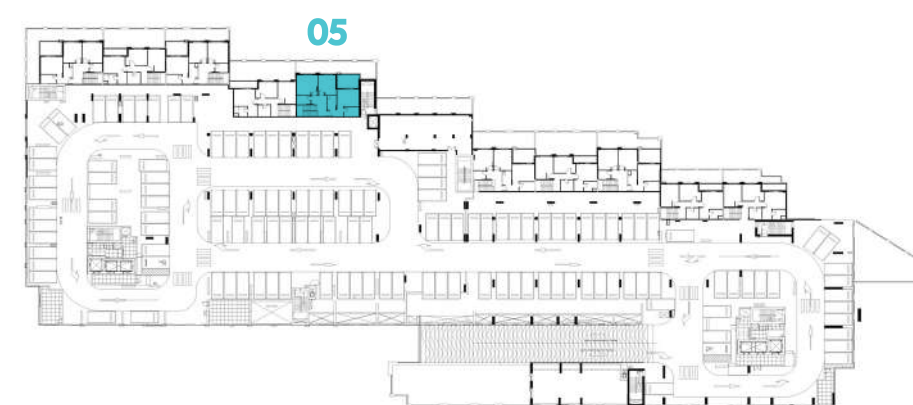
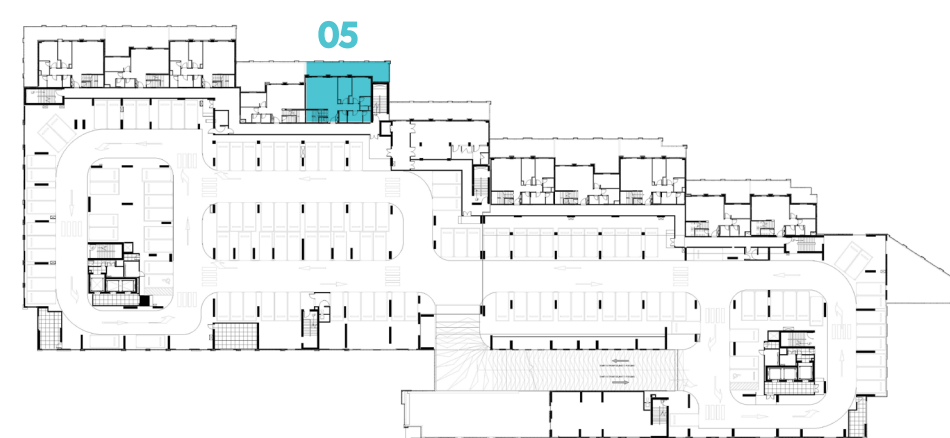
CRYSTAL RESIDENCES

BUILDING	CRYSTAL TWO
4 BEDROOM +STUDY	TYPE 4TH-3
UNIT NO.	105
SUITE AREA	209.7 m ² / 2257.5 ft ²
BALCONY AREA	12.6 m ² / 135.9 ft ²
TERRACE AREA	44.6 m ² / 480.2 ft ²
TOTAL AREA	267.0 m ² / 2873.6 ft ²



LEVEL 01

LEVEL 02



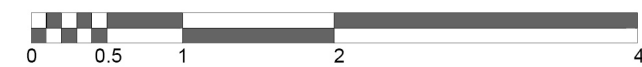
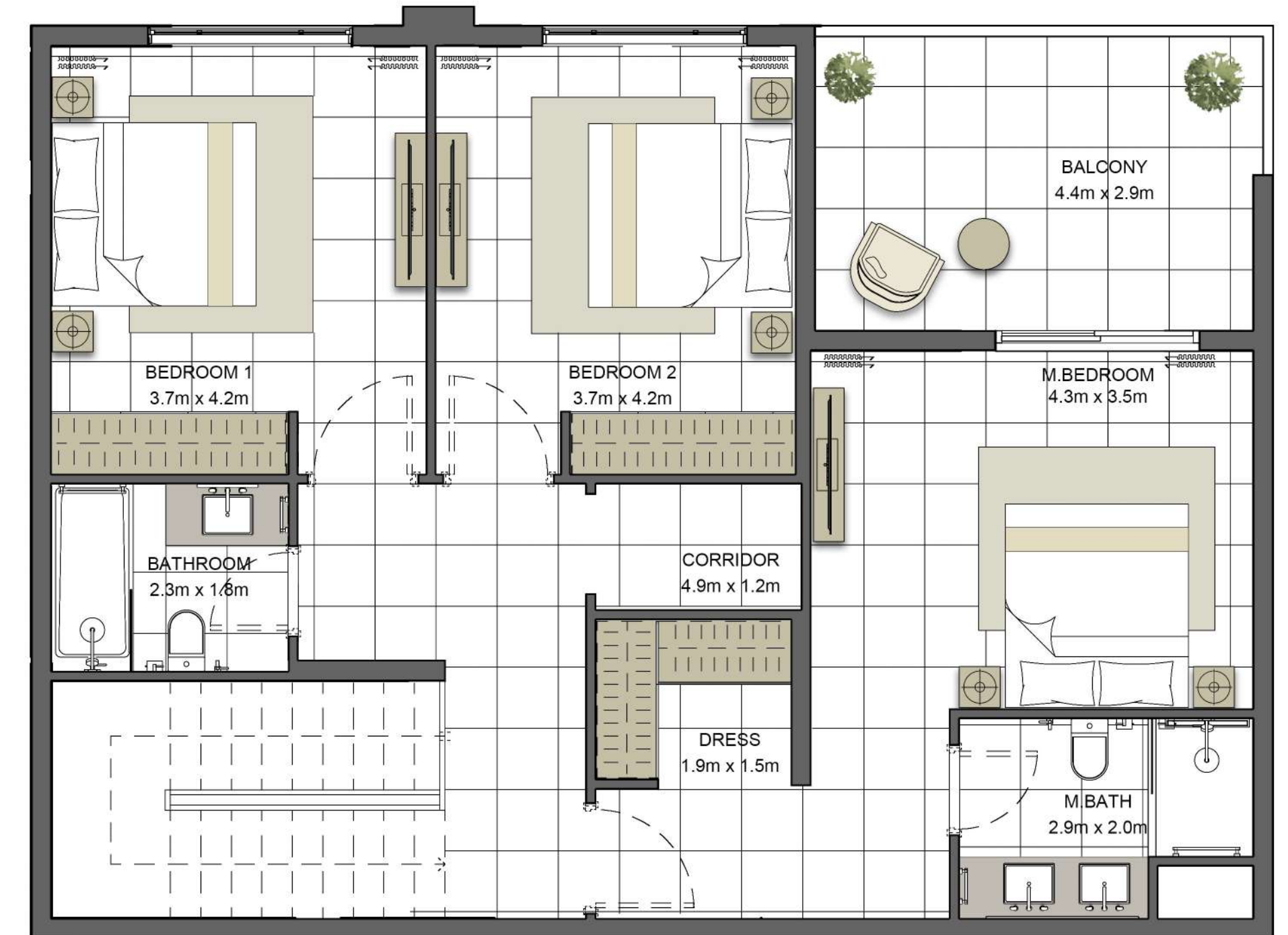
Disclaimer:

1. All room dimensions are measured to structural elements and exclude all finishes and construction tolerances. 2. All dimensions have been provided by our consultant architects. 3. All materials, dimensions and drawings are approximate. Information is subject to change without notice. 4. Actual suite area may vary from the stated area. Drawings not to scale. The developer reserves the right to make revisions. 5. Calculation of suite area is measured as the area bounded by the centre line of the demising or partition walls separating one unit from another unit, the exterior face of all exterior walls, and the exterior face of the corridor wall enclosing the adjoining unit. 6. Calculation of balcony area is measured as the area bounded by the centre line of the demising or partition walls separating one unit from another unit, the outmost face of the enclosing guard and the external face of the unit adjoining the balcony. 7. The units are measured at typical floor in the building. Columns may vary in size depending on the floor level.

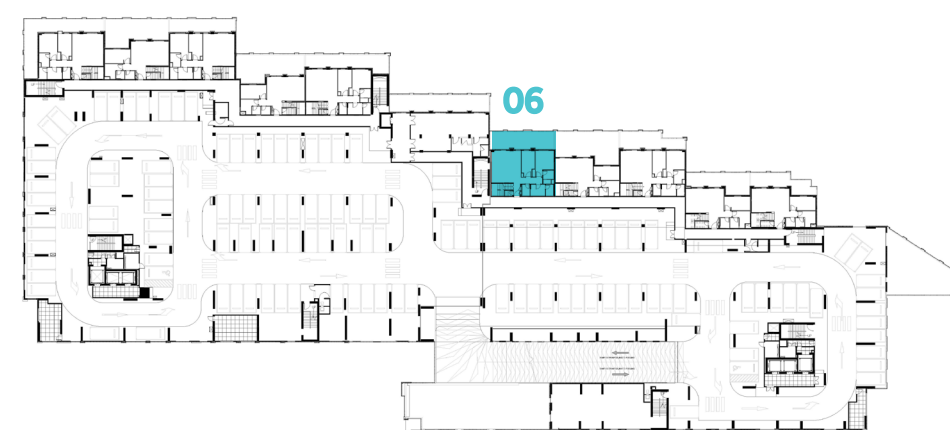
کریستان

CRYSTAL RESIDENCES

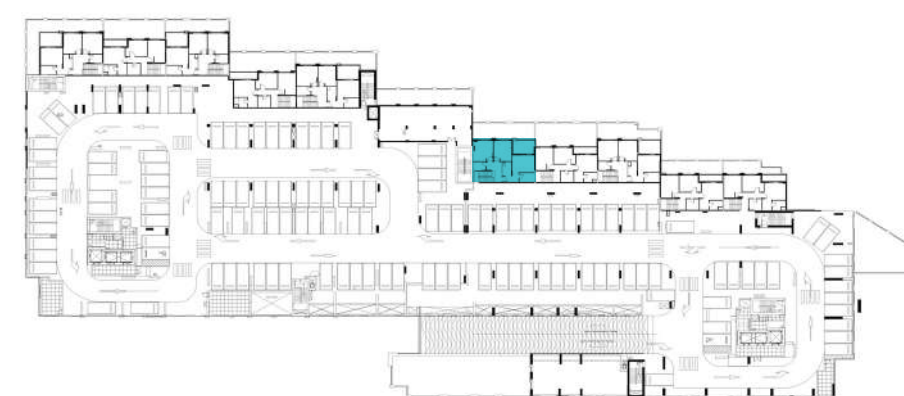
BUILDING	CRYSTAL TWO
4 BEDROOM + STUDY	TYPE 4TH-4
UNIT NO.	106
SUITE AREA	206.0 m ² / 2217.5 ft ²
BALCONY AREA	12.6 m ² / 135.9 ft ²
TERRACE AREA	41.7 m ² / 448.9 ft ²
TOTAL AREA	260.3 m ² / 2802.3 ft ²



LEVEL 01



LEVEL 02



جزيرة مريم
MARYAM ISLAND

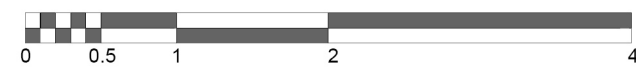
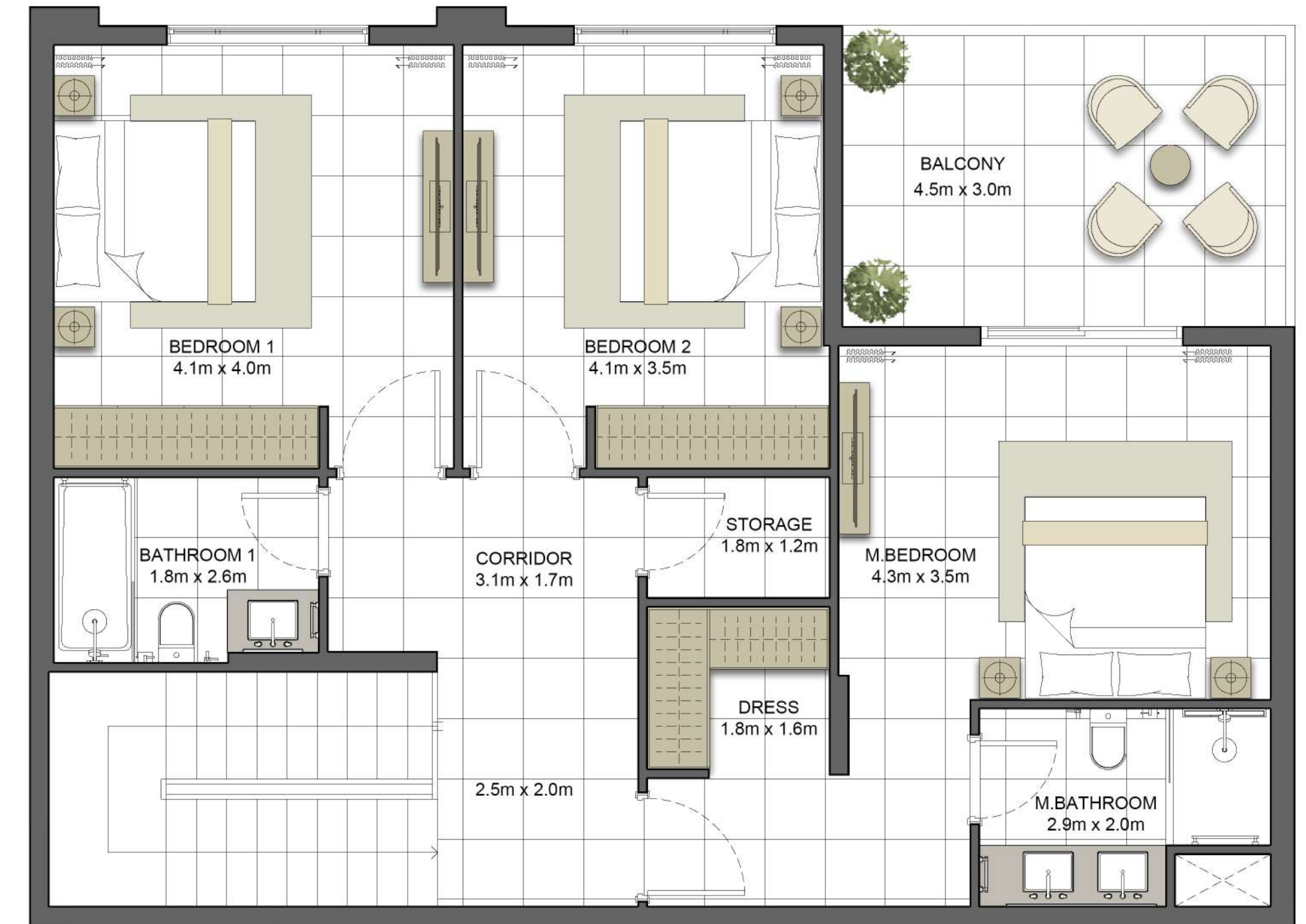
Disclaimer:

1. All room dimensions are measured to structural elements and exclude all finishes and construction tolerances. 2. All dimensions have been provided by our consultant architects. 3. All materials, dimensions and drawings are approximate. Information is subject to change without notice. 4. Actual suite area may vary from the stated area. Drawings not to scale. The developer reserves the right to make revisions. 5. Calculation of suite area is measured as the area bounded by the centre line of the demising or partition walls separating one unit from another unit, the exterior face of all exterior walls, and the exterior face of the corridor wall enclosing the adjoining unit. 6. Calculation of balcony area is measured as the area bounded by the centre line of the demising or partition walls separating one unit from another unit, the outmost face of the enclosing guard and the external face of the unit adjoining the balcony. 7. The units are measured at typical floor in the building. Columns may vary in size depending on the floor level.

کریستان

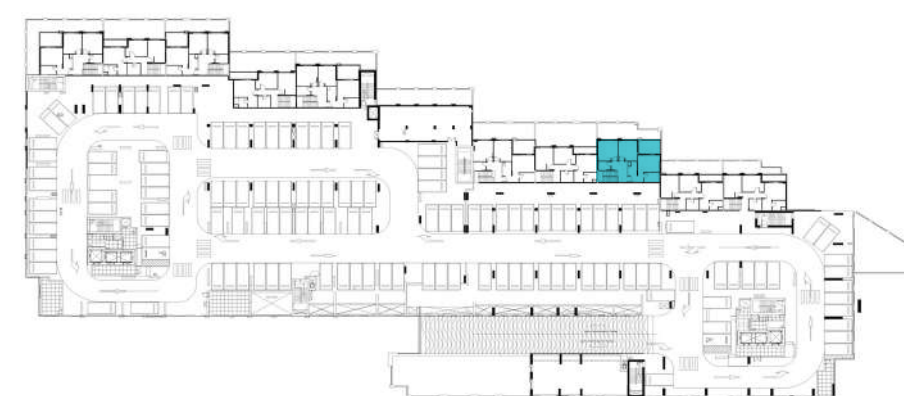
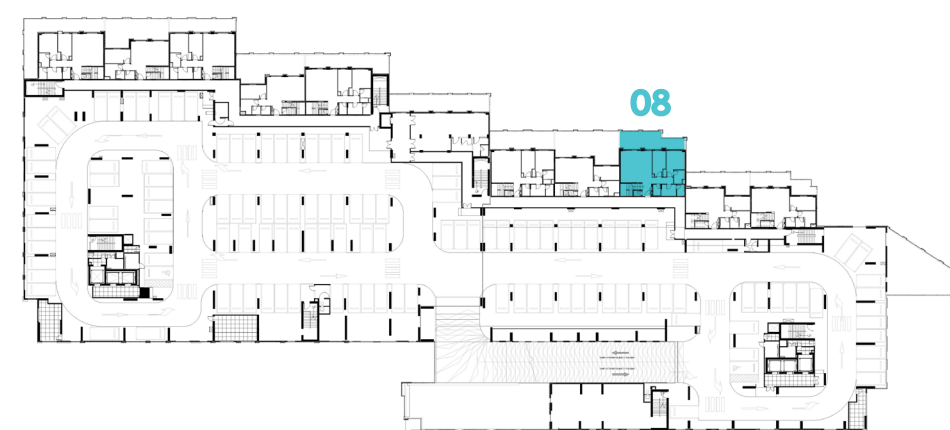
CRYSTAL RESIDENCES

BUILDING	CRYSTAL TWO
3 BEDROOM + STUDY	TYPE 4TH-5
UNIT NO.	108
SUITE AREA	208.3 m ² / 2242.0 ft ²
BALCONY AREA	12.7 m ² / 136.9 ft ²
TERRACE AREA	30.2 m ² / 324.7 ft ²
TOTAL AREA	251.2 m ² / 2703.7 ft ²



LEVEL 01

LEVEL 02



Disclaimer:

1. All room dimensions are measured to structural elements and exclude all finishes and construction tolerances. 2. All dimensions have been provided by our consultant architects. 3. All materials, dimensions and drawings are approximate. Information is subject to change without notice. 4. Actual suite area may vary from the stated area. Drawings not to scale. The developer reserves the right to make revisions. 5. Calculation of suite area is measured as the area bounded by the centre line of the demising or partition walls separating one unit from another unit, the exterior face of all exterior walls, and the exterior face of the corridor wall enclosing the adjoining unit. 6. Calculation of balcony area is measured as the area bounded by the centre line of the demising or partition walls separating one unit from another unit, the outmost face of the enclosing guard and the external face of the unit adjoining the balcony. 7. The units are measured at typical floor in the building. Columns may vary in size depending on the floor level.



جزيرة مريم
MARYAM ISLAND